

P R O J E C T I D E A

**FREE
Take
One!**



Pyramid*

This is an easy school project for geography or history!
Build the sand-filled diorama for more realism.

You will need:

- 1/2 sheet white 3/16" foamboard
- FoamWerks V-Groove Cutter (WC-2001)
- Logan Mat Knife (500)
- FoamWerks Tape (W-5003)
- Stone texture spray paint
- Tan spray paint

Time



Difficulty

Easy

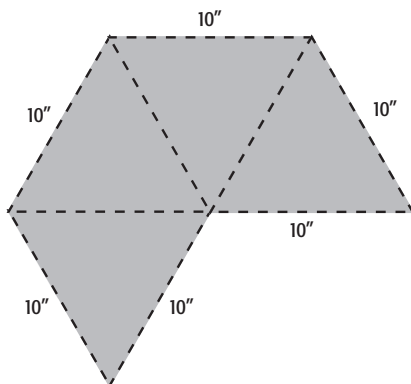
*For even more
exciting
foamboard
projects, read
Foamboard
Magic by
Eileen L. Hull.*



INSTRUCTIONS:

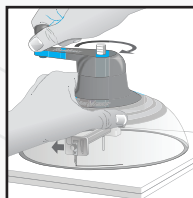
1. Make an equilateral triangle (a triangle where all angles are the same- 60 degrees- which means the three sides are all the same length). Here's an easy way to make it. Determine how big you would like your finished pyramid to be, taking into account that the foamboard normally measures 32" x 40", so work that into your plan. Draw a base line- the model is 10" long. Determine where the halfway point on that line is and draw a line extending up perpendicular to the base line. Take a ruler and line up the end of the base line and a point 10 inches from it on the perpendicular line. Repeat on the other side. Check your measurements- all sides should measure exactly the same for this project to work.
2. Cut out your triangle template very carefully. Place on foamboard and trace, referring to **Diagram 1**. Flip the pattern so triangle lines up with one adjacent to it. Repeat until you have 4 triangles.
3. With V-Groove Cutter cut down the middle of the lines you have drawn.
4. Repeat throughout pattern. When all lines have been cut, remove excess foam and brush off.
5. Tear a piece of white tape and place one half the length on the end piece of the pyramid shape. Fold pyramid up into triangular shape and adhere sides together with tape.
6. Spray with a coat of tan paint as a base coat. Then add a fairly thick coat of stone texture spray paint all over the pyramid. Allow to dry in between coats. Add more if necessary. Add highlights with tan spray paint.

Diagram 1

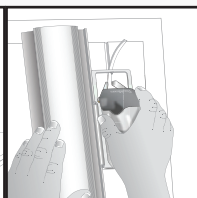


Designer tips:

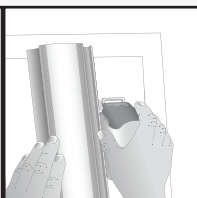
The desert scene is a piece of foamboard covered with a towel. Layer objects under the towel to give some height to the sand dunes. This scene used almost a full bag of play sand, which was smoothed out by rolling a glass over the scene. Palm trees and camels were added to the display for a little more excitement. The palm trees were made by wrapping a piece of dowel with floral tape and adding in green leaves punched out of green paper. The camels are drinking from an oasis made from a glass dish that was covered with sand and some water poured in.



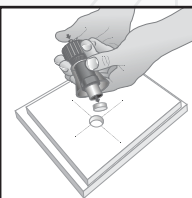
WA-8001 FoamWerks
Circle Cutter



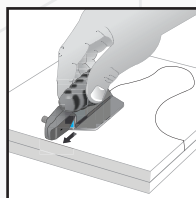
WC-6001 FoamWerks
Straight Cutter



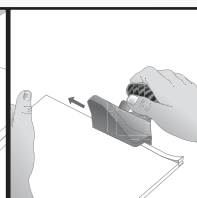
WC-2001 FoamWerks
V-Groove Cutter



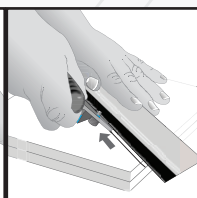
WD-8010 FoamWerks
Hole Drill



WB-6020 FoamWerks
Freestyle Cutter



WC-4010 FoamWerks
Rabbet Cutter



WC-6010 FoamWerks
Straight/Bevel Cutter

brought to
you by

LOGAN
GRAPHIC PRODUCTS, INC.
Tools for Art - Tools for Life

Logan Graphic Products, Inc.
1100 Brown Street
Wauconda, IL 60084 USA
1-800-331-6232
www.foamwerks.com